

NOTES: UNLESS OTHERWISE SPECIFIED

1. INTERPRET DRAWING IN ACCORDANCE WITH ASME Y14.5-1994
2. PARTS TO BE PACKAGED IN TAPE & REEL PER EIA STD-481
3. PICK-UP TAB DEFLECTS UPON INSERTION OF THE SHIELD
4. FLAT STOCK .004 ± .001 THICK.

PART NUMBER BREAKDOWN

7-V2008 - 1 □ □ □ □

REL CLIP
PACKAGING

VARIATION

CODE	"A" HOLE
1	Ø .008
2	No Hole

PLATING CODE

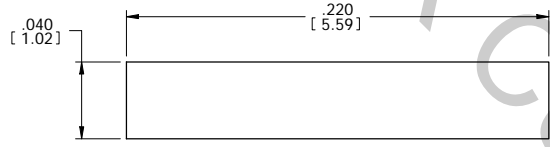
AA= PREPLATED .000120" [0.00305] MIN Sn/Pb OVER .000050" [0.00127] MIN Ni

TT= PREPLATED .000120" [0.00305] MIN MATTE Sn OVER .000050" [0.00127] MIN Ni

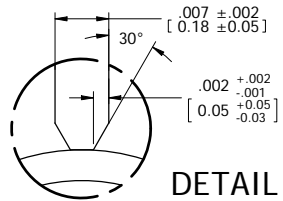
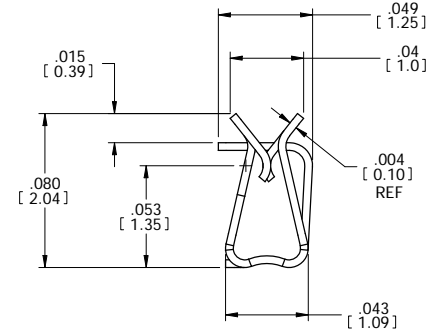
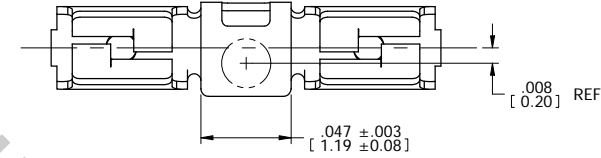
MAT'L DESIGNATION

CODE	MATERIAL
1	BERYLLIUM COPPER
0	STAINLESS STEEL

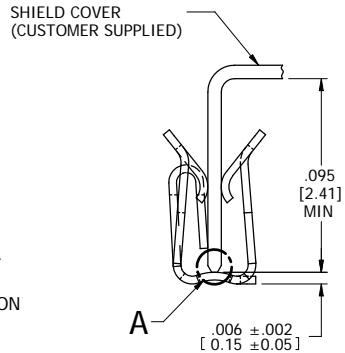
REV	REVISION RECORD	ECN	BY	APVD	DATE
A	INITIAL RELEASE	500218	JB	JB	02/08/00
B	PER EWR 100642	500811	TM	JB	08/29/00
C	PER EWR101165	501400	TM	JM	03/08/01
D	ADDED "TT" PER EWR 103508	503111	BT	JB	1/20/2004
E	ADDED DUAL DIM PER EWR103940	503412	BT	JB	6/22/2004
F	ADD SS MAT'L PER EWR105761	505249	HR	PVB	1/14/2008
G	REVISE PLATTING NOTE PER EWR106134	505531	HR	PVB	9/8/2008
H	ADDED .095 MIN SHIELD HEIGHT	505554	DJA	HR	9/24/2008
J	ADDED MATERIAL DIMS PER EWR 106617	505873	RJB	PVB	10/8/2009



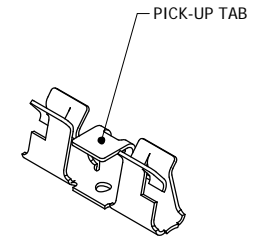
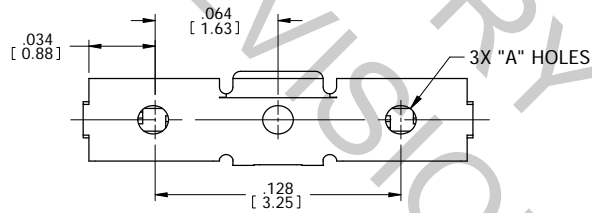
RECOMMENDED PAD SIZE



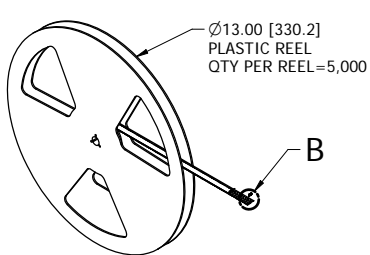
DETAIL A
EDGE FINISH RECOMMENDATION



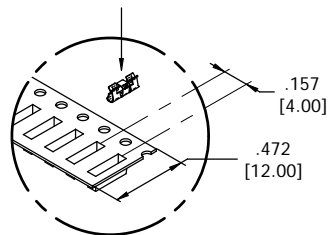
APPLICATION VIEW



CUSTOMER DRAWING



TAPE & REEL PACKAGING



DETAIL B

The drawing and the information set forth hereon are the property of AutosplICE, Inc. and are to be held in trust and confidence. Publication, disclosure, or use for any purpose not expressly authorizing in writing by AutosplICE, Inc. is prohibited.

MATERIAL: 4
FINISH: SEE PLATING CODE

TOLERANCES UNLESS OTHERWISE SPECIFIED DIMENSIONS IN INCHES (mm)		autosplICE®		AutosplICE, Inc. 10121 Barnes Canyon Rd. San Diego, CA 92121-2725. 858.535.0077	
DECIMAL:	.XX = ± .01 [XX] = ± [0.3] XXX = ± .005 [XXX] = ± [0.13]	THIRD ANGLE PROJECTION	ENGINEERED BY	JOE	5/13/98
ANGULAR:	± 1°		DATE	JB	5/13/98
TITLE: SMT MINI RFI CLIP					
SIZE:	C	ECN NO:	OAE89	DESCRIPTION:	C7-V2008-1□□□□□
SHEET 201 CAD NO: C7-V2008-1□□□□□ MODEL NO: 7-V2008-011.ppt SHEET 1 OF 1					