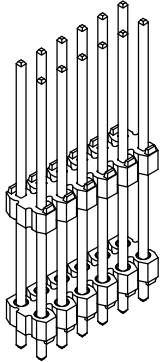
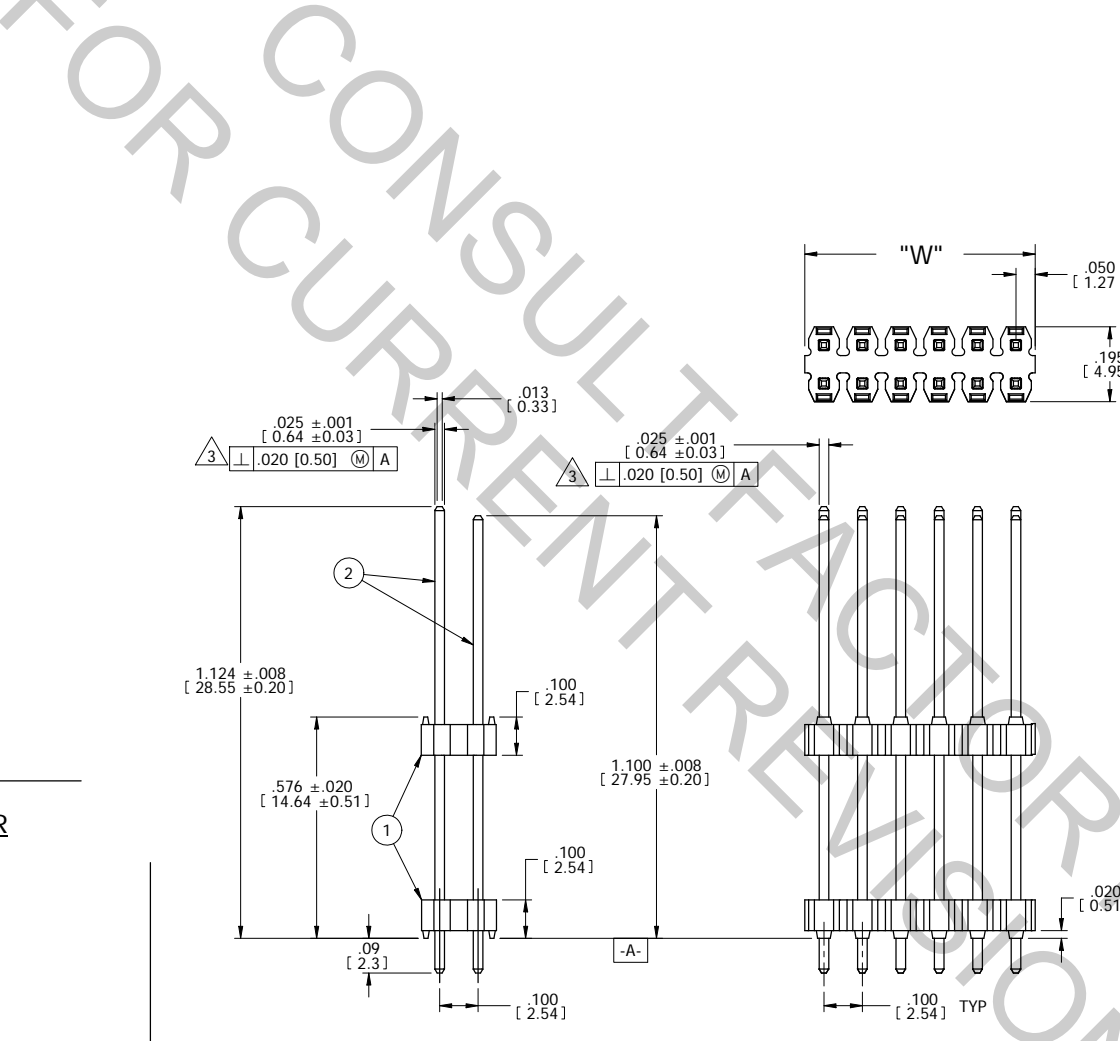


- NOTES: UNLESS OTHERWISE SPECIFIED
1. INTERPRET DRAWING IN ACCORDANCE ASME Y14.5-1994.
  2. PART SUPPLIED AS CUT HEADERS IN PACKAGING TUBES AS SHOWN, SEALED WITH PLASTIC TAPE. SEE TABLE FOR QTY PER TUBE.
  3. DIMENSIONS INDICATED ARE TO BE MEASURED WITH INSULATORS RESTRAINED FLAT.

AUTOSPlice PART NO.	TOTAL NO. OF PINS	QTY PER TUBE	"W"
23-1070-26AA	26	18	1.300 [33.02]
23-1070-26TT			.700 [17.78]
23-1070-14AA	14	33	

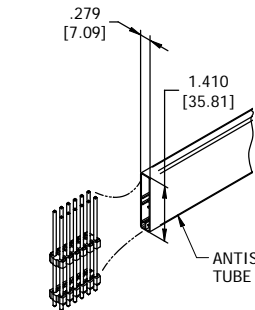
REV	REVISION RECORD	ECN	BY	APVD	DATE
A	INITIAL RELEASE	505147	HR	PVB	08/20/07
B	REVISE PKGNG QTY PER EWR105824	505297	HR	PVB	02/25/08
C	ADDED P/N 23-1070-26TT PER EWR106486	505842	Pete	PVB	08/24/09



**MATERIAL:**

1. **INSULATOR:**  
HIGH TEMPERATURE THERMOPLASTIC,  
FLAMMABILITY RATED: UL 94V-0, COLOR: BLACK
  2. **PIN:**  
BRASS, C26000
- FINISH:** (BARE TIPS PERMISSIBLE)
- AA = 120μ" [3.05 MICRONS] MIN. 90/10 SnPb  
OVER 50μ" [1.27 MICRONS] MIN. Ni.
- TT = 160μ" [4.06 MICRONS] MIN. MATTE Sn  
(Pb FREE) OVER 80μ" [2.03 MICRONS] MIN. Ni.

**PACKAGED HEADER ORIENTATION**



**CONFIDENTIAL  
CUSTOMER DRAWING**

**P/N 23-1070-12 SHOWN**

The drawing and the information set forth hereon are the property of Autosplice, Inc. and are to be held in trust and confidence. Publication, disclosure, or use for any purpose not expressly authorizing in writing by Autosplice, Inc. is prohibited.

TOLERANCES UNLESS OTHERWISE SPECIFIED DIMENSIONS IN INCHES (mm)	<b>autosplice</b>		Autosplice, Inc. 10121 Barnes Canyon Rd. San Diego, CA 92121-2725 858.595.0077
DECIMAL: .XX = ± .01 [X.X] = ± [0.25] XXX = ± .005 [X.XX] = ± [0.13]	THIRD ANGLE PROJECTION	ENGINEERED BY: HR	DATE: 8-20-07
ANGULAR: ± 5°	TITLE: AUTOHEADER™ DUAL INSULATOR, .025 [0.64] SO PIN STAGGERED	DATE: 8-20-07	REV: 8-20-07
◇ DENOTES SPECIAL CHARACTERISTIC	SIZE: C	FORM NO: OAE89	ISSUE NO: C23-1070-12
SCALE: 4:1	P/N: C23-1070-12	REV: 8-20-07	SHEET 1 OF 1