

4

3

2

1

NOTES: UNLESS OTHERWISE SPECIFIED

- 1. INTERPRET DRAWING IN ACCORDANCE WITH ANSI Y14.5-1982.
- 2. 5,000 PINS APPROX. PER AUTOHEADER™ REEL. FEEDER COMPATIBLE SPLICES PERMITTED, 2 SPLICES MAX. PER REEL

PART NO. / ORDERING CODE

23-1051 F □ □ □ □ □ X

TYPE  
1 ROW,  
.156 [3.96] CENTERS

VARIATION  
OMIT FOR STD

FINISH

FINISH CODE SIZE  
AA .000120" [3.05 MICRONS] MIN. TIN/LEAD OVER  
.000050 [1.27 MICRONS] MIN NI  
TT .000160 [4.06 MICRONS] MIN Sn OVER .000080  
[2.03 MICRONS] MIN NI

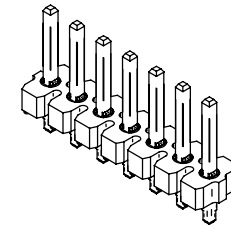
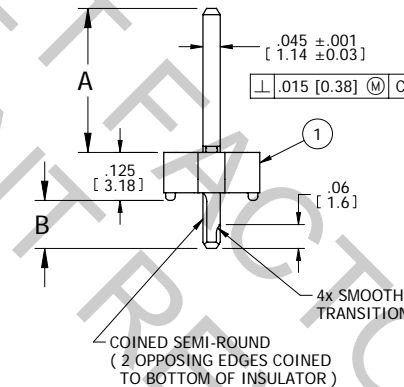
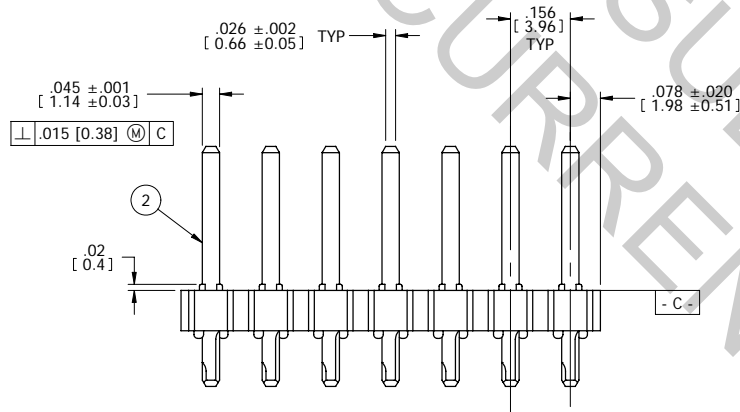
DIMENSIONS

CODE	A	B
A1	.575±.010 [14.61±0.25]	.125±.010 [3.18±0.25]
A2	.375±.010 [9.53±0.25]	

TOTAL NO. OF POS.  
2 00 = CONTINUOUS REEL

REV	REVISION RECORD	ECN	BY	APVD	DATE
A	RELEASED FOR PRODUCTION	503296	Pete	PVB	04/17/04
B	PIN COINED TO BOTTOM OF INSULATOR ADDED DIM. .06 [1.5]	503571	BILL	PVB	09/27/04
C	ADD TT PLATING PER EWR 105484	505017	HR	PVB	05/31/07

CUSTOM DIMENSIONS ARE AVAILABLE UPON REQUEST TO FACTORY.



MATERIAL:

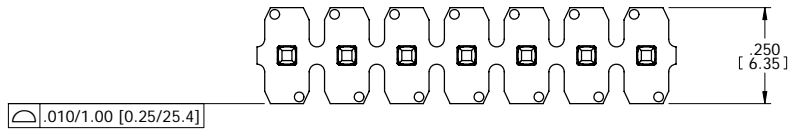
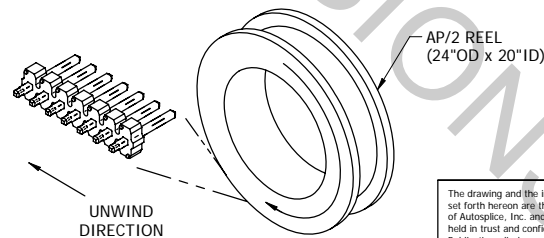
- 1 INSULATOR: HIGH TEMPERATURE THERMOPLASTIC FLAMMABILITY RATED: UL 94V-0 COLOR: BLACK
- 2 PIN: BRASS, C26000

FINISH:

SEE P/N ORDERING CODE (PIN TIPS BARE AT CUT-OFF)

CUSTOMER DRAWING

REEL HEADER ORIENTATION



TOLERANCES UNLESS OTHERWISE SPECIFIED		DIMENSIONS IN INCHES	
DECIMAL	XX = ±.01 (X.X) = ±[0.3]	XXX = ±.005 (X.XXX) = ±[0.13]	ANGULAR = ±5°
DIAMETRIC CHARACTERISTIC		TOLERANCE	

The drawing and the information set forth hereon are the property of AutosplICE, Inc. and are to be held in trust and confidence. Publication, disclosure, or use for any purpose not expressly authorizing in writing by AutosplICE, Inc. is prohibited.

AutosplICE, Inc.  
10121 Barnes Canyon Rd.  
San Diego, CA 92121-2725  
858.535.0077

DATE: 07/21/03  
ENGINEERED BY: Pete PVB  
DESIGNED BY: PVB

TITLE: AUTOHEADER 1 ROW .156 CTRS, SPL.  
SIZE: C  
PART NO: OAE89  
DESCRIPTION: C23-1051  
SCALE: 4:1  
EAW NO: C23-1051.dft  
MODEL NO: 23-1051.asm  
SHEET 1 OF 1