

4

3

2

1

NOTES: UNLESS OTHERWISE SPECIFIED

1. INTERPRET DRAWING IN ACCORDANCE WITH ASME Y14.5-1994.

2. PART SUPPLIED ON A CONTINUOUS REEL AS SHOWN. 25,000 ±15% PINS PER REEL. FEEDER COMPATIBLE SPLICES PERMITTED, 2 SPLICES MAX PER REEL.

3. COMPLIANT TIPS ARE BARE AT CUT-OFF.

4. .010 [0.25] MAX RADII AND FILLET.

5. ASSEMBLY DIMENSIONS ARE MEASURED IN A RESTRAINED STATE.

6. HEADER SIZES CUT FROM A REEL ARE PACKAGED IN BULK.

7. CONSULT AUTOSPlice FOR INSERTION TOOLING.

8. PIN TIP CONFORMS TO EWCAP -001.

9. RECOMMENDED .062" THICK PC BOARD HOLE:

DRILLED HOLE - Ø .0453±.0010 [Ø 1.151±0.025]

COPPER PLATED - Ø .0410±.0020 [Ø 1.041±0.051]

(HASL) TIN/LEAD PLATED - Ø .040±.003 [1.02±0.08]

DRILLED HOLE - Ø .0453±.0010 [Ø 1.151±0.025]

COPPER PLATED - Ø .0410±.0020 [Ø 1.041±0.051]

NICKEL PLATED - Ø .040±.002 [1.02±0.08]

GOLD PLATED - Ø .040±.002 [1.02±0.05]

DRILLED HOLE - Ø .0453±.0010 [Ø 1.151±0.025]

COPPER PLATED - Ø .0413±.0020 [Ø 1.041±0.051]

SILVER PLATED - Ø .040±.002 [1.02±0.05]

REV	REVISION RECORD	ECN	BY	APVD	DATE
X4	ADDED "Z" A6, 23-1045D101[1]IAA	-	Pete	PVB	12/02/04
A	INITIAL RELEASE	503752	Pete	PVB	02/04/05
B	CHANGE A5 DIM, WAS .362[9.20]	504115	Pete	PVB	09/23/05
C	DIM. TOL. .025±.001 WAS .025±.002	504257	BILL	PVB	12/08/05
D	REVISE "TT" PLATING PER EWR105587	505115	HR	PVB	9/13/2007
E	ADD "23-1045D03A3AA" PER EWR105595	505343	HR	PVB	4/3/2008
F	ADDED (04A3AA) PER EWR106625	505891	RJB	PVB	10/26/2009

PART NO. / ORDERING CODE

23-1045 D 00 [1] [1] [1]

TYPE \_\_\_\_\_ FINISH \_\_\_\_\_

1 ROW .100 [2.54] CENTERS

AA = .000040-.000120" [0.00102-0.00305] TIN/LEAD (90/10) OVER .000050" [0.00127] MIN NICKEL

TT = .000040-.00080" [0.00102-0.00203] TIN (LEAD FREE) OVER .000080 [0.00203] MIN NICKEL

PIN COMPLIANT .025 SQ. [0.64]

TOTAL NO. OF POS. \_\_\_\_\_

00 = CONTINUOUS REEL

CUT HEADER SIZES: 2 TO 20 POSITIONS

BULK PACK IN PROTECTIVE TRAYS

POS. = QTY

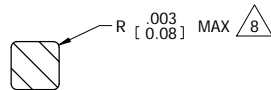
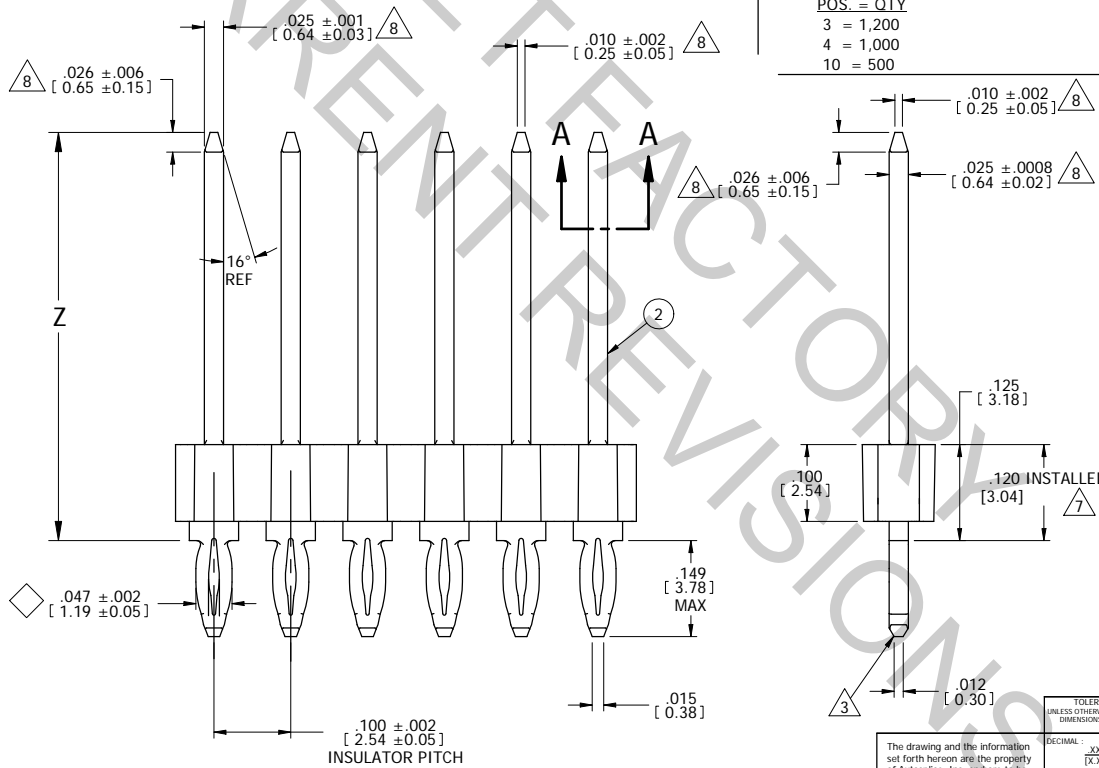
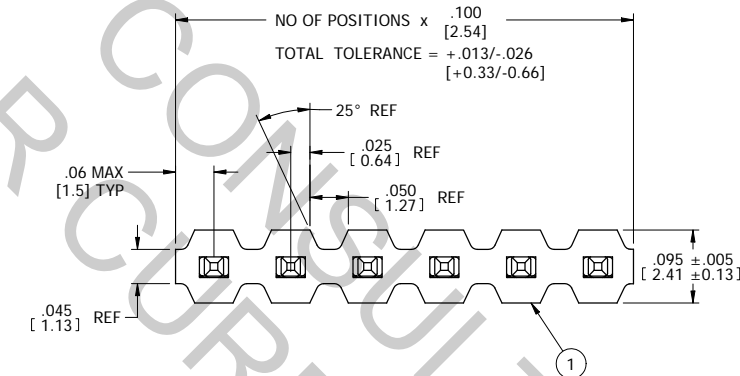
3 = 1,200

4 = 1,000

10 = 500

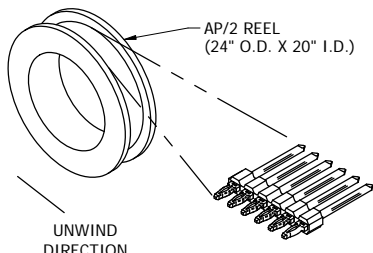
CODE	Z
A1	.419 [10.65]
A2	.437 [11.10]
A3	.531 [13.50]
A4	.604 [15.35]
A5	.585 [14.85]
A6	.384 [9.75]

ADDITIONAL PIN SIZES & LENGTHS UP TO "Z" = 1.575 CAN BE MADE UPON REQUEST



SECTION A-A

SCALE : 20:1



REELED HEADER ORIENTATION

MATERIAL:

1 INSULATOR:

GLASS FILLED THERMOPLASTIC POLYESTER, FLAMMABILITY RATED: UL 94HB COLOR: BLACK

2 PIN:

COPPER ALLOY

FINISH:

SEE PART NO. / ORDERING CODE

CUSTOMER DRAWING

TOLERANCES UNLESS OTHERWISE SPECIFIED DIMENSIONS IN INCHES

DECIMAL: .XX = ±.01 [X.X] = ±[0.3] .XXX = ±.004 [X.XX] = ±[0.10] ANGULAR: ± 5°

DIAMETERS SPECIAL CHARACTERISTIC

autosplice

Autosplice, Inc. 10121 Barnes Canyon Rd. San Diego, CA 92121-2725 858.585.0077

DATE: 12-04-02

ENGINEERED BY: Pete PVB

TITLE: AUTOHEADER™ 1 ROW, .025 [0.64] SQ. COMPLIANT PIN, .100 [2.54] CENTERS

SIZE: C OAE89

SCALE: 8:1

REV: F

The drawing and the information set forth hereon are the property of Autosplice, Inc. and are to be held in trust and confidence. Publication, disclosure, or use for any purpose not expressly authorizing in writing by Autosplice, Inc. is prohibited.

4

3

2

1