

4

3

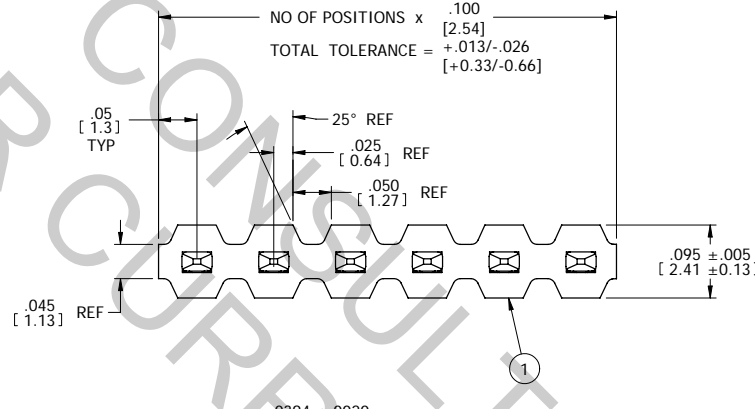
2

1

REV	REVISION RECORD	ECN	BY	APVD	DATE
A	RELEASED PER EWR 102133	502716	Pete	PVB	04/28/03
B	REVISED PER EWR 104801	504295	BILL	PVB	01/06/06

- NOTES: UNLESS OTHERWISE SPECIFIED
- 2 INTERPRET DRAWING IN ACCORDANCE WITH ASME Y14.5-1994.
  - 3 PART SUPPLIED ON A CONTINUOUS REEL AS SHOWN, 25,000 ±15% PINS PER REEL. FEEDER COMPATIBLE SPLICES PERMITTED, 2 SPLICES MAX PER REEL.
  - 4 COMPLIANT TIPS ARE BARE AT CUT-OFF.
  - 5 .010 [0.25] MAX RADII AND FILLET.
  - 6 ASSEMBLY DIMENSIONS ARE MEASURED IN A RESTRAINED STATE.
  - 7 HEADER SIZES CUT FROM A REEL ARE PACKAGED IN BULK.
  - 8 CONSULT AUTOSPlice FOR INSERTION TOOLING.
  - 8. RECOMMENDED .062" THICK PC BOARD HOLE:
    - DRILLED HOLE - Ø .0453±.0010 [Ø 1.151±0.025]
    - COPPER PLATED - Ø .0410±.0020 [Ø 1.041±0.051]
    - NICKEL PLATED - Ø .040±.002 [1.02±0.08]
    - (HASL) TIN/LEAD PLATED - Ø .040±.003 [1.02±0.08]

- DRILLED HOLE - Ø .0453±.0010 [Ø 1.151±0.025]
  - COPPER PLATED - Ø .0410±.0020 [Ø 1.041±0.051]
  - NICKEL PLATED - Ø .040±.002 [1.02±0.08]
  - GOLD PLATED - Ø .040±.002 [1.02±0.05]
- 
- DRILLED HOLE - Ø .0453±.0010 [Ø 1.151±0.025]
  - COPPER PLATED - Ø .0413±.0020 [Ø 1.041±0.051]
  - SILVER PLATED - Ø .040±.002 [1.02±0.05]



**PART NO. / ORDERING CODE**

23-1040 R 00□□ A A

TYPE 1 ROW .100 [2.54] CENTERS

RECT. PIN COMPLIANT

FINISH .000040"-.000120" [1.02-3.05 MICRONS] TIN/LEAD (90/10) OVER .000050" [1.27 MICRONS] MIN. NICKEL

.025 X .0394 [0.64] [1.000]

TOTAL NO. OF POS.

**DIMENSIONS**

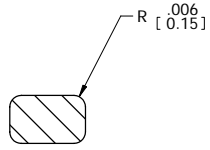
CODE	Z
A1	.419 [10.65]
A2	.437 [11.10]
A3	.531 [13.50]

2 00 = CONTINUOUS REEL

2 CUT HEADER SIZES: 2 TO 20 POSITIONS BULK PACKAGED IN POLYBAG POS. = QTY

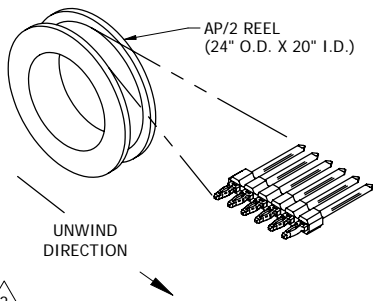
- 2 = 4,000±15%
- 4 = 2,000±15%

ADDITIONAL PIN SIZES & LENGTHS UP TO \*Z" = 1.575 [40.00] CAN BE MADE UPON REQUEST

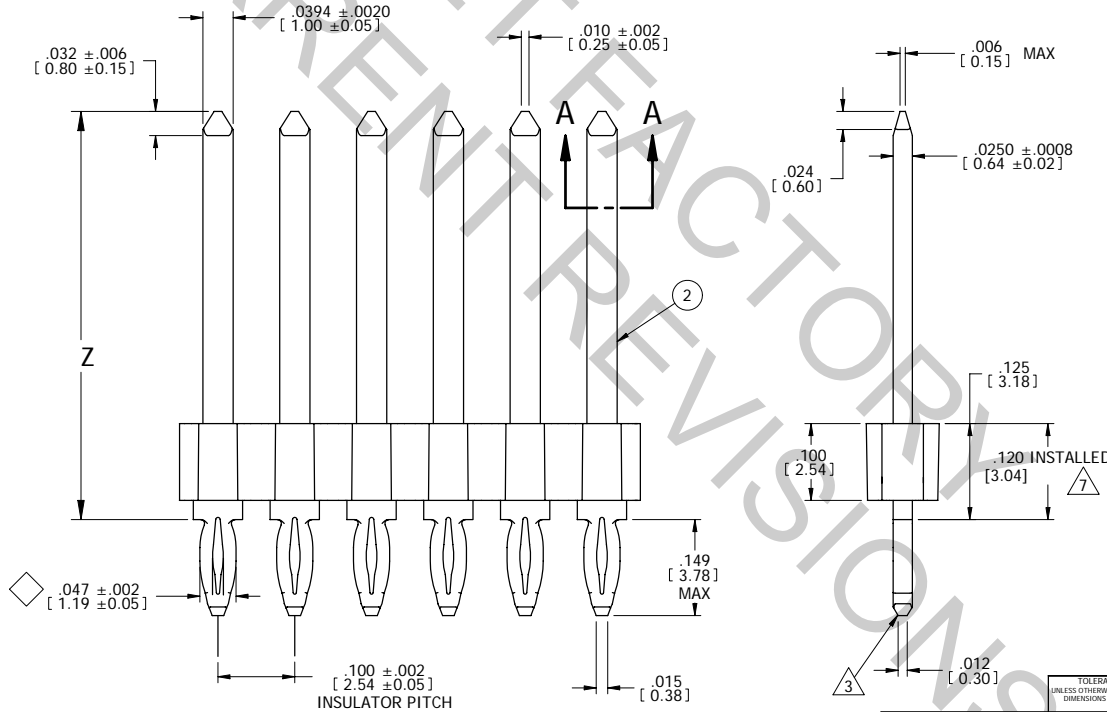


**SECTION A-A**

SCALE : 20:1



**REELLED HEADER ORIENTATION**



**MATERIAL:**

1 **INSULATOR:** GLASS FILLED THERMOPLASTIC POLYESTER, FLAMMABILITY RATED: UL 94HB COLOR: BLACK

2 **PIN:** COPPER ALLOY

**FINISH:**

SEE PART NO. / ORDERING CODE

**CUSTOMER DRAWING**

TOLERANCES UNLESS OTHERWISE SPECIFIED DIMENSIONS IN INCHES		Autosplice, Inc. 10121 Barnes Canyon Rd. San Diego, CA 92121-2725. 858.585.0077	
DECIMAL: XX = ±.01 [X.X] ±[0.3]	XXX = ±.004 [X.XX] ±[0.10]	ANGULAR: ± 5°	DIAMETERS: ±.001 [X.XX] ±[0.02]
TITLE: AUTOHEADER™, 1 ROW, .100 [2.54] CTRS		DATE: 5-17-02	REVISION: B
SIZE: C	FORM NO: OAE89	DESIGNER: Pete	ENGINEERED BY: PVB
SCALE: 8:1	DWG NO: 23-1040.dft	MODEL NO: 23-1040.asm	SHEET 1 OF 1

The drawing and the information set forth hereon are the property of Autosplice, Inc. and are to be held in trust and confidence. Publication, disclosure, or use for any purpose not expressly authorizing in writing by Autosplice, Inc. is prohibited.

4

3

2

1