

4

3

2

1

NOTES: UNLESS OTHERWISE SPECIFIED

- 1. INTERPRET DRAWING IN ACCORDANCE WITH ANSI Y14.5-1982.
- 2. SUPPLIED IN REEL FORM AND CUT TO LENGTH. AUTOSPLICE PART NO. IS FOR AN INDIVIDUAL POSITION. 4,000 TABS PER AUTOHEADER REEL. FEEDER COMPATIBLE SPLICES PERMITTED, 2 SPLICES MAX PER REEL.
- 3. .003 [0.08] BLANKING BURR ON TAB.
- 4. DIMENSIONS INDICATED ARE TO BE MEASURED WITH INSULATOR RESTRAINED FLAT ON DATUMS F & G OVER 4 POSITIONS.
- 5. FEEDER CUTOFF FROM CONTINUOUS STRIP.
- 6. FINISH THICKNESS TO BE INSPECTED BETWEEN .250 [6.35] MIN & .350 [8.89] MAX AS INDICATED.

PART NO. / ORDERING CODE

REV	REVISION RECORD	ECN	BY	APVD	DATE
A	INITIAL RELEASE	502056	Pete	PVB	03/26/02

23-1035 T 00 A1 AA

TYPE
1 ROW .207 [5.25] CENTERS

TAB SIZE/SHAPE

SIZE / RECTANGULAR
.0315 X .110 [0.80] [2.80]

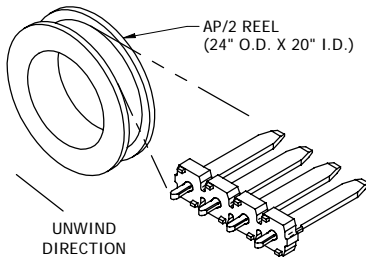
FINISH
.000120" [3.05 MICRONS] MIN. 90/10 TIN/LEAD OVER .000050" [1.27 MICRONS] MIN. NICKEL

DIMENSIONS

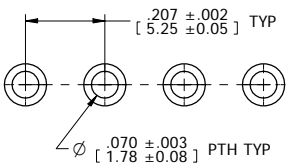
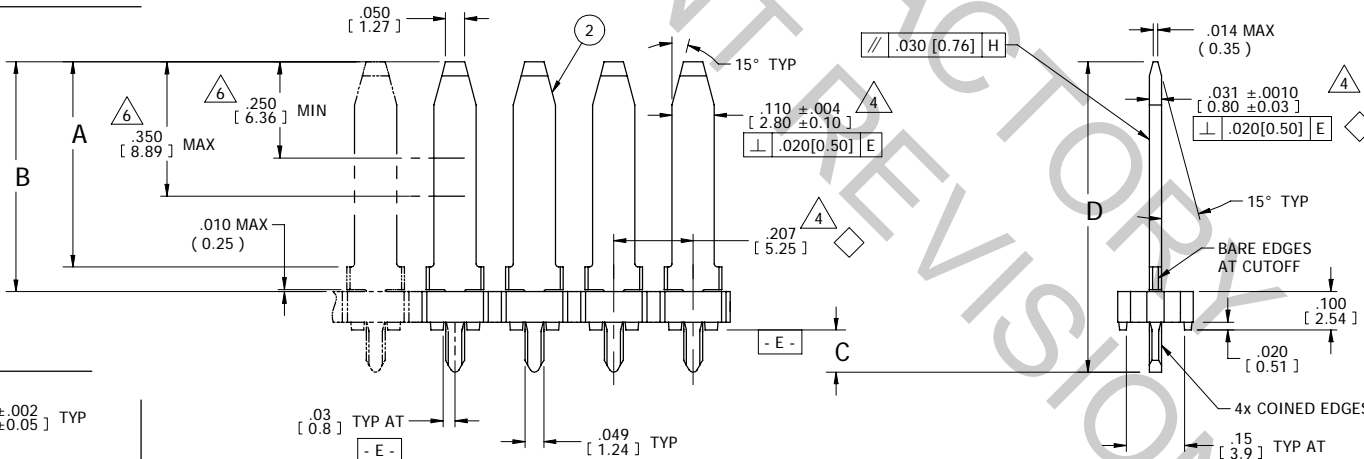
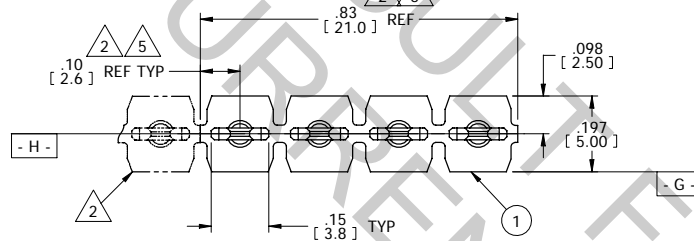
A	B	C	D	REF
.534 [13.56]	.60 [15.2]	.11 [2.8]	.81 [20.5]	

2 TOTAL NO. OF POS.
CONTINUOUS REEL

CUSTOM DIMENSIONS ARE AVAILABLE UPON REQUEST TO FACTORY



REELED HEADER ORIENTATION



CUSTOMER PCB HOLE PATTERN SCALE: 4:1

MATERIAL:

- 1 INSULATOR:
HIGH TEMPERATURE THERMOPLASTIC, FLAMMABILITY RATED: UL 94V-0, COLOR: BLACK
 - 2 TAB:
BRASS C26000
- FINISH:
SEE PART NO. / ORDERING CODE

CUSTOMER DRAWING

TOLERANCES UNLESS OTHERWISE SPECIFIED DIMENSIONS IN INCHES (mm)		AutosplICE, Inc. 10121 Barnes Canyon Rd. San Diego, CA 92121-2725 858.535.0077	
DECIMAL: XX = ± .012 [X.X] = ± [0.3] .XXX = ± .005 [X.XX] = ± [0.13]	THIRD ANGLE PROJECTION	ENGINEERED BY: Pete	DATE: 5-10-01
ANGULAR: ± 5°		DESIGNED BY: PVB	DATE: 5-10-01
TITLE: AUTOHEADER TAB .110, 5.25mm SP			
SIZE: C	TRN NO: OAE89	ORDER NUMBER: C23-1035T00A1AA	REVISION: A
SCALE: 4:1		TRN NO: C23-1035.dft	MODEL NO: 23-1035.asm

The drawing and the information set forth herein are the property of AutosplICE, Inc. and are to be held in trust and confidence. Publication, disclosure, or use for any purpose not expressly authorizing in writing by AutosplICE, Inc. is prohibited.

4

3

2

1